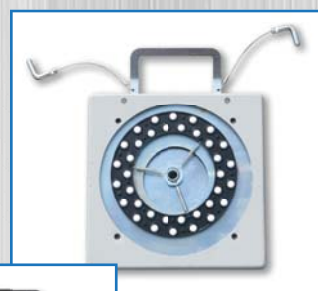
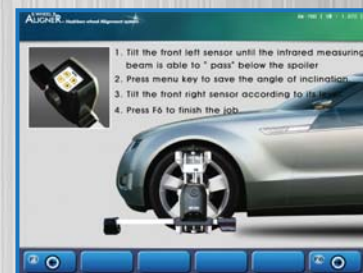


Turn-Tables



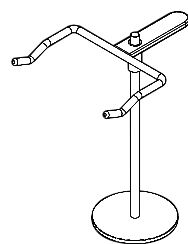
36pcs acetal ball



#### Front axis spoiler procedure

During the detector aligning and levelling operations, beware that the vehicle under test might be equipped with a front spoiler preventing the front detectors from communicating between each other. If communication between the detectors is inhibited, this problem is automatically detected and managed by the program.

#### Accessory



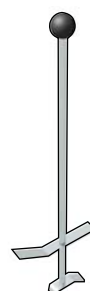
#### Steering Lock

This device is used to keep the steer in a locked position.



#### Wheel Clamps

Pair of self-centering 4 point clamps, with removable claws



#### Pedal Depressor

The pedal depressor is a tool used to lock the brake pedal while arranging for measurement.



#### Turn Tables

The rotating plates have a pan of 320 mm and a capacity of 1000 kg.

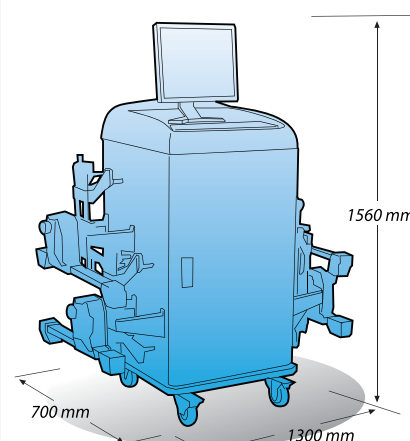
#### SPECIFICATION

Model	HA-710
Monitor	17" color LCD
Communication	Wireless bluetooth
Sensor type	CCD
Clamp	9" ~ 21"
Spoiler	○
Printer	○
Cabinet	Basic

#### MEASURING RANGES AND ACCURACY

Measuring front and back axle	Accuracy	Total measuring range
Toe-in	±2' ±4°	±22°
Set-Back	±3' ±4°	±22°
Camber	±3' ±6°	±22°
Caster	±9'	±18°
King Pin	±9'	±18°

#### Lay-Out



# WHEEL ALIGNER

**Autodata**

**Bluetooth™**

100%  
CORDLESS

CE

- Simple program software
- Instantaneous transfer
- High speed DSP processor
- Front axis spoiler procedure
- HP computer
- O/S: Windows7 Home edition
- HP inkjet color printer
- Blitz speaker



*Series*  
WHEEL ALIGNMENT SYSTEM  
**HA-710**



**HESHBON**

108, Robot land-ro 249beon-gil, Seo-gu, Incheon 404-170, KOREA  
TEL:+82-1577-3520(Representative) / +82-32-585-3570(Overseas sales)  
FAX:+82-32-585-3535 http://www.heshbon.com e-mail:export@heshbon.com



**HESHBON®**

• Specification of the model can be subject to change without prior notice.  
• Copyright 2015 Heshbon co.,ltd. All rights reserved.



# (( WHEEL )) ALIGNER™

Heshbon wheel Alignment system

**START**



**FINISH**



*Series*  
WHEEL ALIGNMENT SYSTEM  
**HA-710**

**Autodata**

**Bluetooth™**



## Electronic level monitoring system

Electronic level monitoring system give us efficiency and precise.



## High speed DSP processor

Highly integrated, 32bit microprocessor acquires real-time measurements to provide immediate response between changes in actual measurement and displayed values.



## CCD Image sensor

Unlike the generic sensor system, able to cope with various measurement hinderances like reflected lights.

## 8-CCD Wireless Bluetooth™ Sensors

- On-sensor controls permits users to operate selective computer software functions from any wheel location eliminating the need for countless return trips to the console
- Greater speed, improved range and accuracy and quick, precise measurement readings
- Instantaneous wireless data transfer as far away as between sensors and aligner
- Automatic battery-charging docking stations keeps sensors charged and ready at all times
- Sleep-mode function during vehicle adjustment periods to preserve battery life
- On-screen displays alert alignment technician of possible sensor adjustments required for precise, accurate readings



## Compact size sensors

Compact size sensor head gives user convenience and it can be easily moved



## Lithium-ion battery & Battery charger

The special battery charger assures quick, safe charging of the removable battery packs, and is complete with discharge system to keep the batteries in peak condition

