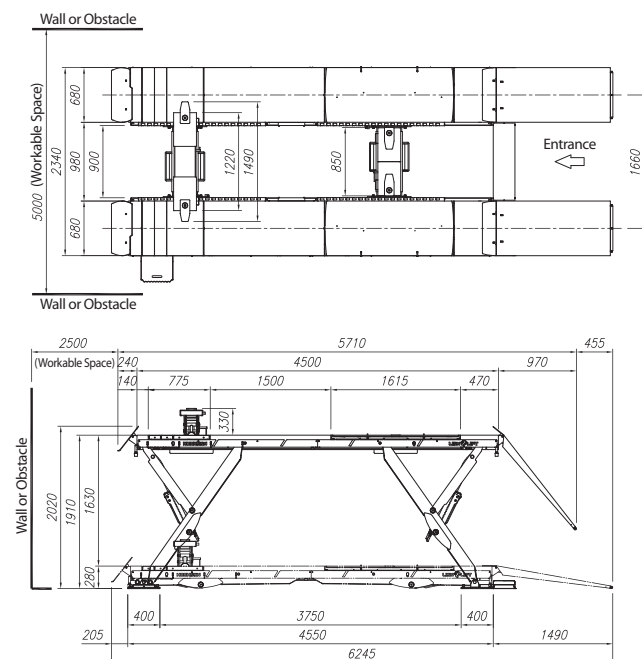
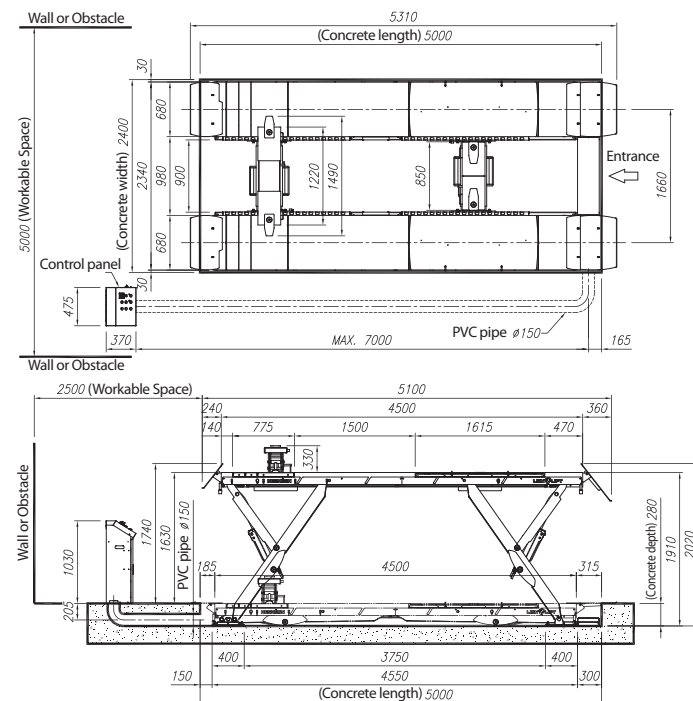


## >>LAYOUT

On ground



In ground



## >>Specification

Lifting Capacity	Main : 4,500 kg / Jack : 2,500 kg
Max. Lifting Height	Main : 1,910 mm / Jack : 540 mm
Min. Lifting Height	Main : 280 mm / Jack : 210 mm
Stroke	Main : 1,630 mm / Jack : 330 mm
Dimension	6,245(L) X 280(H) X 2,340(W) mm
Ascending time	Main : 60~75 sec. / Jack : 5~15 sec.
Descending time	Main : 40~70 sec. / Jack : 10~30 sec.
Power supply	3ph : 3HP 4P 220/380V 60Hz
Weight	About 2,800 kg (without control panel)

# WHEEL ALIGNMENT SEMI SCISSOR LIFT

# LION LIFT



HL-L5BA / 4.5ton



**HESHBON**

673-52, GYEONGSEO-DONG, SEO-GU, INCHEON, 404-170 KOREA  
TEL:+82-32-585-3570(Overseas Sales Dept.) FAX:+82-32-585-3535



**HESHBON**

Specification of the model can be subject to change without prior notice.  
Copyright 2013 Heshbon co.,ltd. All rights reserved.

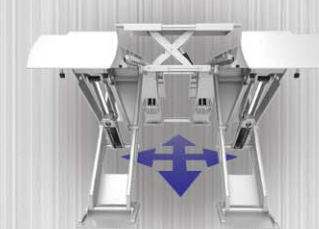




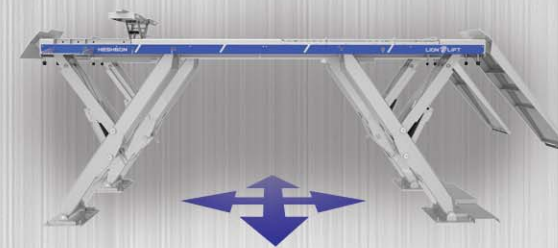
Combining stability of 4 post lift and advantages of scissor type lift, a new machine of Heshbon, LION LIFT is creating a new history of car lift industries.



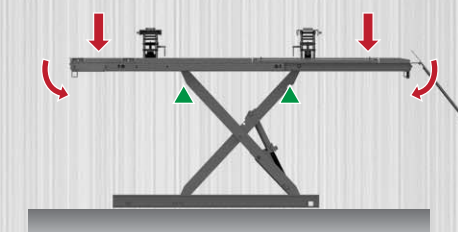
**Point 1**  
Free access  
to all four  
directions



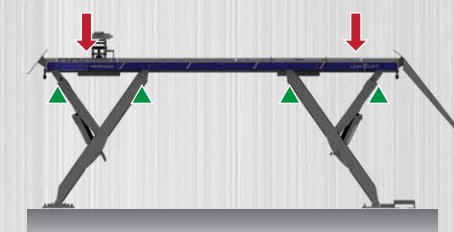
Semi-scissor type lift which has no cross beam and base that workers can move freely around all four directions.



**Point 2**  
Stable  
support



**2 POINT**  
There are two support points on scissor lift and supporting force will be weaker for deflection of run way as the lift ascend.



**4 POINT**  
There are 4 support points which provide more supporting force to prevent deflection of run way compared to scissor lift regardless of ascending height.

**Point 3**  
Efficient  
installation  
space



4 post lifts have very good stability, but requires large space for installation.  
(Refer to HL-42L model of Heshbon / Length of Run way is 4.5m)



Lion lift does not have posts that provide enough work space and visual fields. Also lion lift requires less installation space that three lion lifts can be installed instead of two lifts of 4 post on the same space.  
(Refer to HL-L5BA model of Heshbon / Run way is 4.5m)



**1**  
Specialized synchronization method  
Heshbon is the first company to use 6 cylinders to provide more stable synchronization in car lift industries.  
(Patent no.: 1010159430000)



**2**  
Strong and reinforced durability of locker  
4 strong and reinforced lockers provides more safety to use the lift.



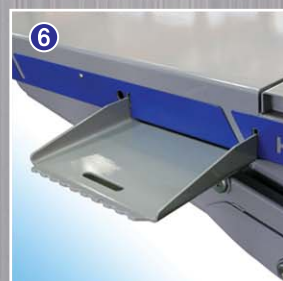
**3**  
Exclusive Wheel Alignment  
Variable front turn table and rear auto locking slide slip are applied for dedicated wheel alignment.



**4**  
Jack lifts mounted  
Two auxiliary jacks are applied for usability.



**5**  
More reliable locking sensor used  
Locking sensors prevent malfunctions of lock mechanism. All four lockers work exactly to lock and to descend the lift.



**6**  
Step aid plate  
Removable step aid plate is applied for usability of workers.



**7**  
Lamp  
Lamp enables workers to work safely under the lift with a light.



**8**  
One body ramp  
Ramp is composed as one body type with run way which enables workers to use space efficiently.



**9**  
No cross beam structure on run ways  
Structure of no cross beam on Run ways allows workers for more convenient access around the lift.



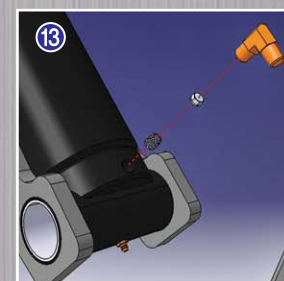
**10**  
Advantages of 4500mm run way  
A long run way is especially suitable for 3D wheel alignment, and enable to handle various vehicles such as small cars, passenger cars and vans.



**11**  
Duct for sensor cable  
Duct is provided for sensor connection of wheel alignment at the side of run ways.



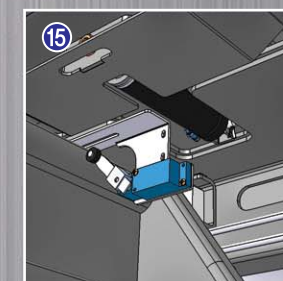
**12**  
Exclusive wheel alignment  
Stable structure and convenient features of Lion lift are dedicated for 3D wheel alignment.



**13**  
Orifice applied  
Orifice (hydraulic safety circuit) is applied to maintain stable descending speed even if hydraulic hose is damaged.



**14**  
Jack switch attached  
Switch is located to operate two center rolling jacks at inside of run way for easy use.



**15**  
Ascending limitation  
Apply limit switches to prevent damages of cars on the lift.