

LCD MONITOR WHEEL BALANCER

HW-125



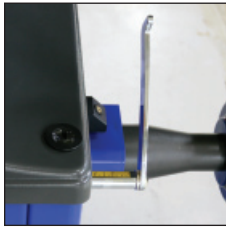
Tire Lift (option)



HESHBON®

• Information in this catalog is subject to change without notice.
• Copyright 2013 Heshbon co.,ltd. All rights reserved.

FEATURE



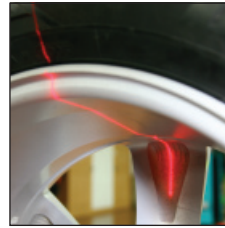
Automatic measuring gauge

Automatic rim distance, width and diameter measuring gauge.



Split weight function

Split weight function for aluminum wheels.
(Hidden weight)



Laser pointer

Indication of the weight correction position.



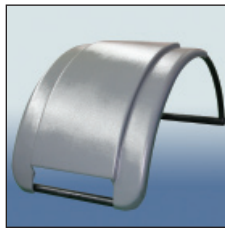
Tire lift (option)

Tire lift is useful to lift up heavy tire for convenience and safety of user.



Quick nut

One touch quick nut.



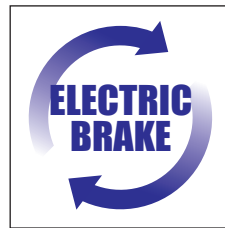
Wheel cover

Wheel cover for safety of user.



Easy-to-program

User friendly operation program & graphic with 17" LCD screen.



Electric Brake

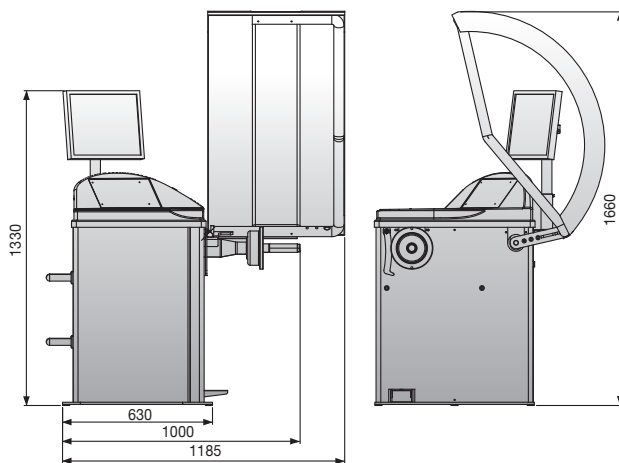
After measurement wheel braked by electric brake in the correct position.



Self-calibration function

Self-calibration is to be executed for precise repairs in order to assure right measurements by zero-setting.

LAY-OUT



SPECIFICATION

Data	Contents
Model	HW-125
Wheel cover	O
Auto position	O
Automatic gauge arm	O
Laser pointer	O
Measurement method	Bothsides simultaneously
Measuring time	7 sec.
Wheel measurement	1.5~20"(W), 0~18cm(L), 10~24"(D)
RPM	200 rpm
Power	AC220V(60Hz/50Hz)
Dimensions	1320x970x1340 mm
Max. wheel weight	65 kg
Measuring unit	1 g
Net weight	160 kg



HESHBON

673-52, GYEONGSEO-DONG, SEO-GU, INCHEON, 404-170 KOREA
TEL:+82-1577-3520(Representative) / +82-32-585-3570(Int'l trading)
FAX:+82-32-585-3535 <http://www.heshbon.com> e-mail: export@heshbon.com